

Front



Back



## AB Grading

Mostly straight boards

No pith/core

Minor cupping/twist is allowed

Drying/surface checks not allowed

Red heart

26mm no red heart allowed on one face, basically A grade

32-50mm max. 25% of the number of boards red heart allowed on one or both faces

One unsound knot allowed on either side per 1 meter length of the board

Minor splits allowed (no discount in width or length)

Large cracks are allowed as long as discounted in the board's width

Minor coloration allowed on both sides, no permanent sticker or water marks

Rot is not permitted

## Width

Both unedged and semi-edged boards are allowed in any grade

Measured in 10mm intervals

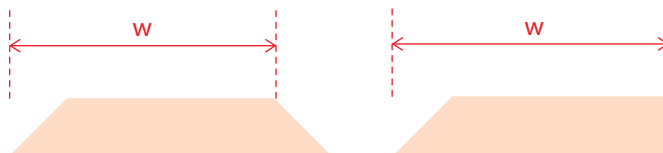
26mm is 120mm wider and max. 5% 100-110mm, measured narrow wane

32-50mm is 140mm wider, measured half wane

26mm = Narrow Wane



32-50mm = Half Wane



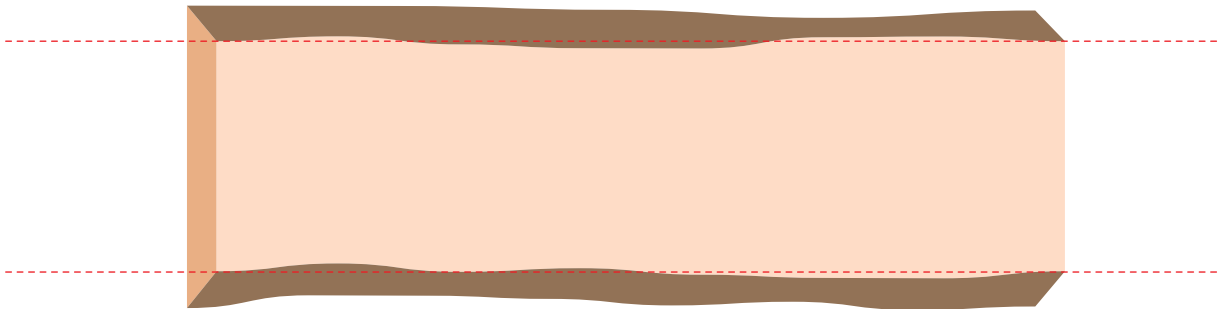
## Length

Measured in 100mm intervals

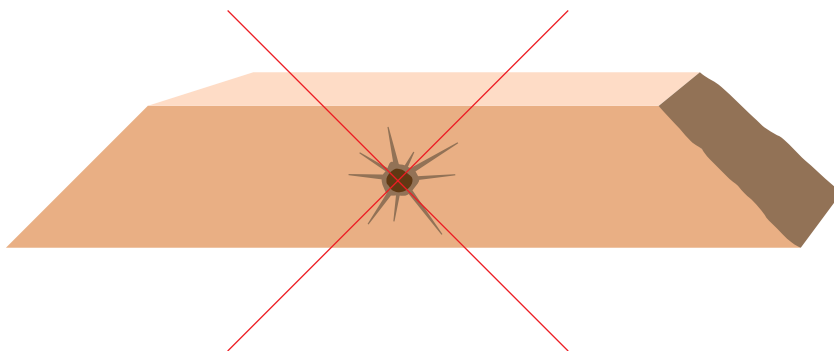
20mm free length (over total length)

Aprox. 70% 2.6 & 3.0m, 30% 2.1 - 2.5m (max. 5% 1.8 - 2.0m)

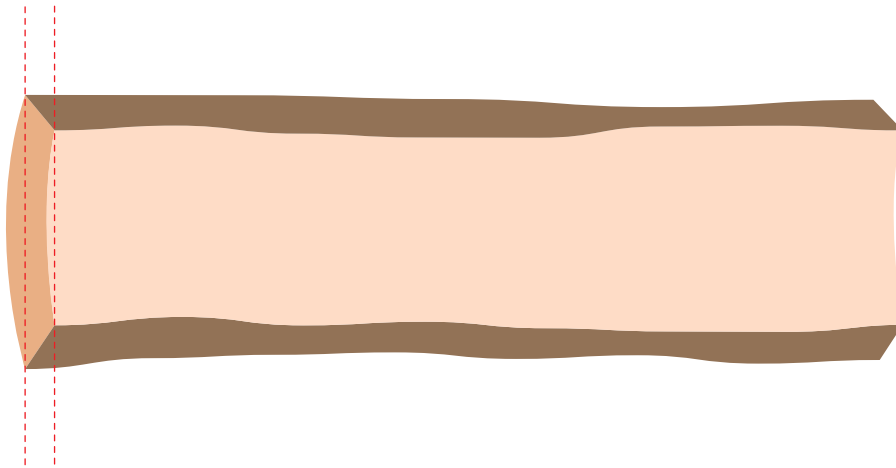
Mostly straight  
boards



No pith/core



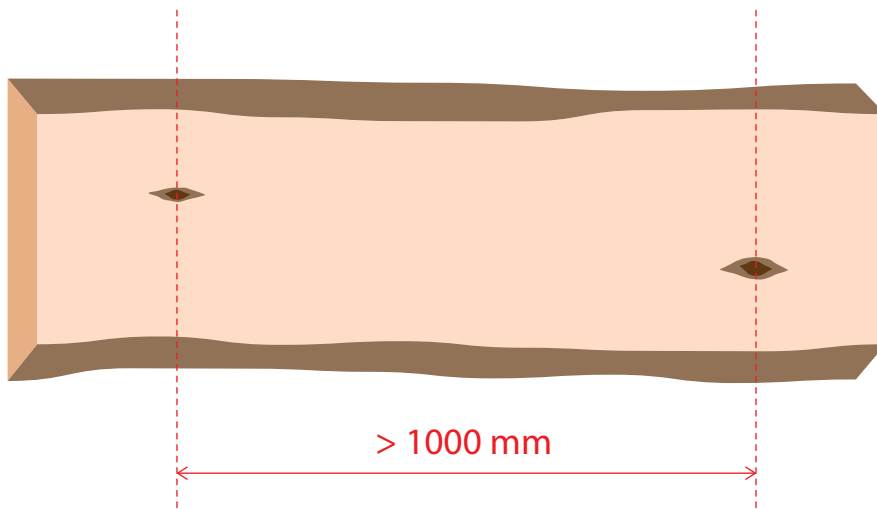
Minor cupping



Minor twist is allowed



One unsound knot allowed on either side per 1 meter length of the board



Large cracks are allowed as long as discounted in the board's width

